

# VEGA

Flexible and Reliable Floodlight Family



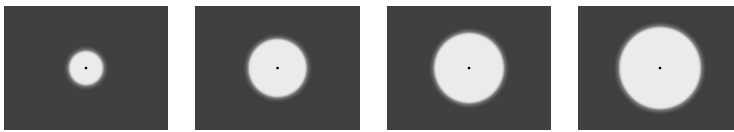
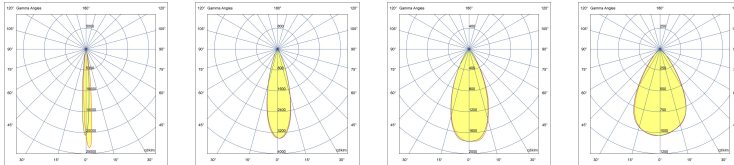
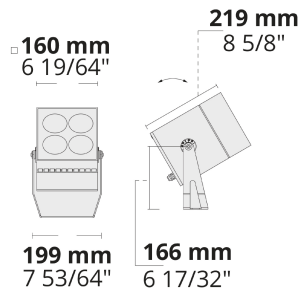
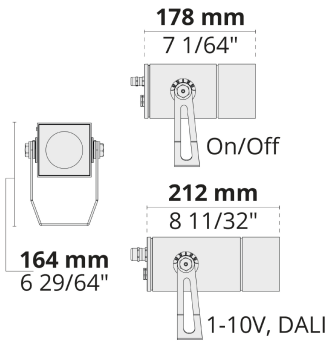
With its square form factor, advanced optics providing perfect beam control, and durable body VEGA family stand out for highlighting architectural details in high-end projects.

- Equipped with HEPER's Hybrid (HYB) module [S] [N]
- 4 different light distribution options from very narrow to wide
- Well-defined beam angles with reflector and lens combined (HYB)
- +60°/-30° vertically adjustable with aim locking set screw allowing fine-tuning
- Different sizes and lumen packages in order to comply with any project needs

Product code	Product name	Light distribution	Delivered lumens flux	Rated input power	Color temperature	Control	Weight
LF8020.693-US	VEGA S	[S] 7°, [N] 26°, [MN] 42°, [M] 60°,	606 - 1019 lm	10 W	2700 K CRI 80, 3000 K CRI 80, 4000 K CRI 70, 4000 K CRI 80	On/Off, 0-10V	4.5 lbs
LF8021.695-US	VEGA	[S] 7°, [N] 26°, [MN] 42°, [M] 60°,	2430 - 3976 lm	35 W	2700 K CRI 80, 3000 K CRI 80, 4000 K CRI 70, 4000 K CRI 80	On/Off, 0-10V	14.3 lbs

LF8020.693

LF8021.695



[S]

Spot - NEMA  
Type 0

[N]

Narrow - NEMA  
Type 2

[MN]

Medium narrow -  
NEMA Type 3

[M]

Medium - NEMA  
Type 4

## Extras

Luminaire body options

**DPC**

**DPC**

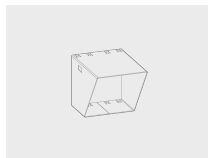
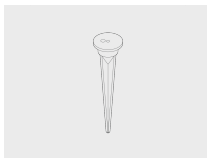
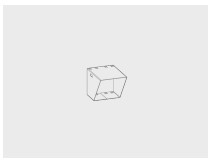
Double powder  
coating

## Accessories (To be ordered separately)

Optical accessories

Mounting accessories

Optical accessories



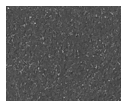
**Visor for VEGA S**  
100708016

**Spike**  
160405040

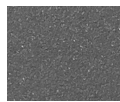
**Visor for VEGA**  
100708017



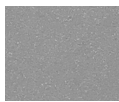
**[HM1]**  
Black



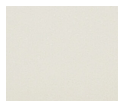
**[HM2]**  
Dark gray



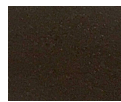
**[HM3]**  
Anthracite  
gray



**[HM4]**  
Light gray



**[HM5]**  
White



**[HM6]**  
Bronze



**[CC]**  
Custom  
color  
(Please  
specify RAL  
code)