

SPARK

Flexible, Stylish and Multi-functional
Floodlight Family



IK05

IK07

IP66



SPARK is a product family that came into play for application in façade and landscape lighting. SPARK is a highly flexible and versatile product usable in different fields thanks to its rich accessories.

- Equipped with high efficacy COB LED with long time reliability
- 4 different light distribution options from very narrow to wide
- Available in 2700K and 3000K with a color rendering index value of 90
- Anodized aluminum body with knurled surface improves the thermal management
- Easy locking system for fine tuning and aiming
- 0°/+355° rotatable, 0°/+90° tiltable mechanism allows precise positioning of the light beam
- Multiple mounting options thanks to its rich accessories such as tree strap, wall bracket and spike

Product code	Product name	Light distribution	Delivered lumens flux	Rated input power	Colour temperature	Control	Weight
LF8040.528-EN	SPARK S	[VN] 16°, [MN] 38°, [M] 52°	220 - 272 lm	4 - 6 W	2700 K CRI 90, 3000 K CRI 80, 3000 K CRI 90		0.25 kg
LF8040.529-EN	SPARK	[VN] 18°, [VN-2] 8°, [N] 24°, [MN] 36°, [M] 60°	327 - 727 lm	10 W	2700 K CRI 90, 3000 K CRI 80, 3000 K CRI 90		0.43 kg
LF8040.530-EN	SPARK L	[VN] 15°, [N] 25°, [MN] 35°, [M] 60°	1009 - 1345 lm	15 W	2700 K CRI 90, 3000 K CRI 80, 3000 K CRI 90		0.82 kg
LF8041.529-EN	SPARK Zoom		174 - 215 lm	5 W	2700 K CRI 90, 3000 K CRI 80, 3000 K CRI 90		0.43 kg

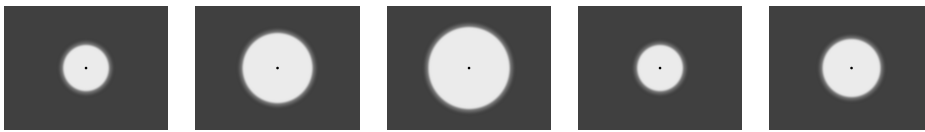
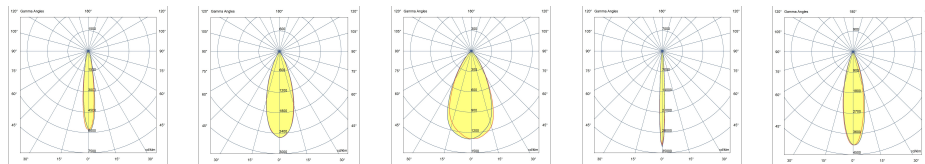
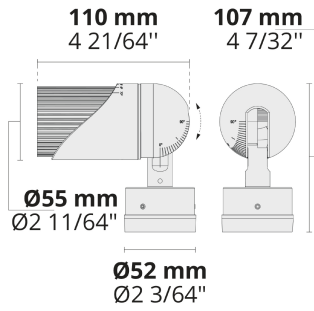
HPR Pazarlama A.Ş.

Başkent OSB 22. Cd. No: 2, Malıköy, Temelli,
Sincan, 06909 Ankara, Turkey
+90 312 267 54 30
info@hepergroup.com

HEPER Europe GmbH

Ahornweg 5a, 58675
Hemer, Germany
+49 237 2901 2975
infoEU@hepergroup.com

We reserve the right to change specifications without prior written notice. Edition: 09.04.2024.
For current version visit heperlighting.com. All flux (±%7 tolerance) and power values (±%10 tolerance) are derived following appropriate IES, CIE, and applicable standards.

**[VN]**

Very narrow

[MN]

Medium narrow

[M]

Medium

[VN-2]

Very narrow

[N]

Narrow

Extras

Light output

**BCF**

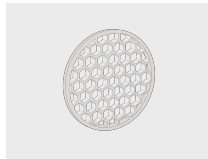
Blue Colour Filter

Light output

**GCF**

Green Colour Filter

Light output

**HNY**

Honeycomb

Light output

**OCF**

Orange Colour Filter

Light output

**RCF**

Red Colour Filter

Light output

**YCF**

Yellow Colour Filter

Luminaire body options

**DPC****DPC**Double powder
coating

Mounting options

**PM**

Pole Mount

Mounting options

**WM**

Wall Mount

Accessories (To be ordered separately)

Mounting accessories

Mounting accessories

Mounting accessories

HPR Pazarlama A.Ş.Başkent OSB 22. Cd. No: 2, Malıköy, Temelli,
Sincan, 06909 Ankara, Turkey

+90 312 267 54 30

info@hepergroup.com

HEPER Europe GmbH

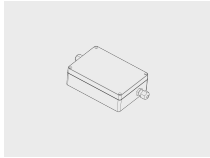
Ahornweg 5a, 58675

Hemer, Germany

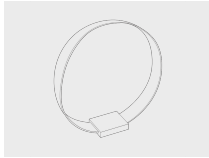
+49 237 2901 2975

infoEU@hepergroup.com

We reserve the right to change specifications without prior written notice. Edition: 09.04.2024.
For current version visit heperlighting.com. All flux ($\pm 7\%$ tolerance) and power values ($\pm 10\%$ tolerance) are derived following appropriate IES, CIE, and applicable standards.



**DALI & On/Off
driver within an
IP67 box for
SPARK S**
007502876

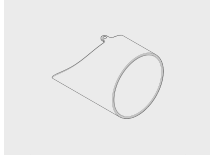


**Tree belt for
SPARK**
180901194



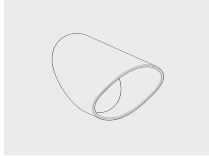
Spike
160405040

Optical accessories



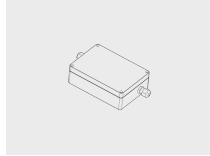
Visor for SPARK
101652204

Optical accessories

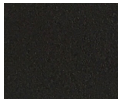


Snoot for SPARK
101652202

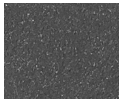
Mounting accessories



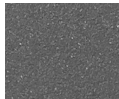
**DALI & On/Off
driver within an
IP67 box for
SPARK**
007502121



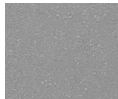
[HM1]
Black



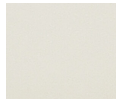
[HM2]
Dark grey



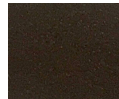
[HM3]
Anthracite
grey



[HM4]
Light grey



[HM5]
White



[HM6]
Bronze



[CC]
Custom
colour
(Please
specify RAL
code)