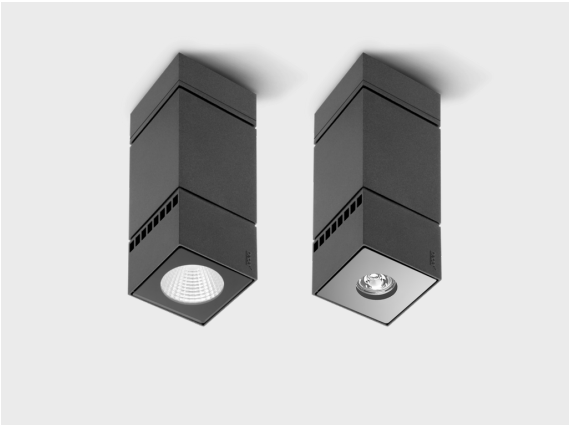


# VEGA C

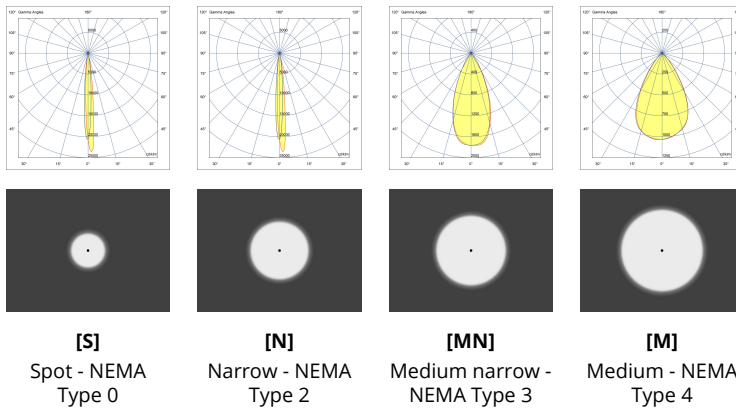
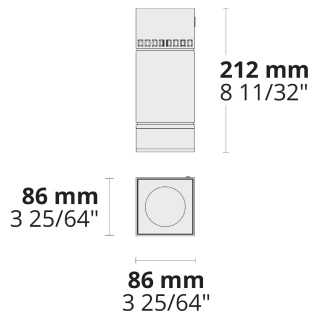
Flexible and Reliable Product Family



With its square form factor, advanced optics providing perfect beam control, and durable body VEGA C family stand out for highlighting architectural details in modern projects.

- Equipped with HEPER's Hybrid (HYB) module [S] [N]
- 4 different throw options
- Well-defined beam angles with reflector and lens combined (HYB)
- Easy installation and maintenance

Product code	Product name	Light distribution	Delivered lumens flux	Rated input power	Color temperature	Control	Weight
LD8020.693-US	VEGA C	[S] 7°, [N] 26°, [MN] 42°, [M] 60°	606 - 1019 lm	10 W	2700 K CRI 80, 3000 K CRI 80, 4000 K CRI 70, 4000 K CRI 80	On/Off, 0-10V	11.9 lbs



## Extras

### Luminaire body options

**DPC**

**DPC**

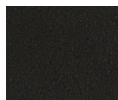
Double powder coating

## Accessories (To be ordered separately)

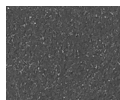
### Optical accessories



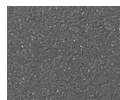
**Visor for VEGA S**  
100708016



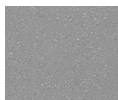
**[HM1]**  
Black



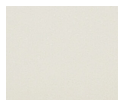
**[HM2]**  
Dark gray



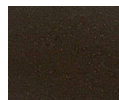
**[HM3]**  
Anthracite  
gray



**[HM4]**  
Light gray



**[HM5]**  
White



**[HM6]**  
Bronze



**[CC]**  
Custom  
color  
(Please  
specify RAL  
code)