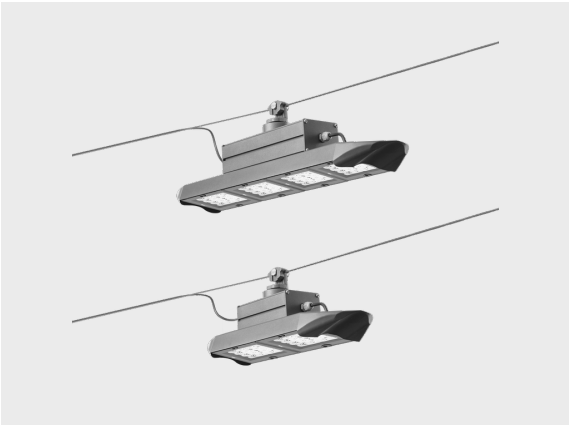


# C-LIGHT

A new way to catenary lighting

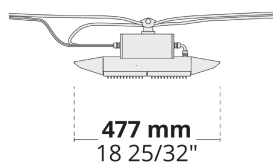


Modern design is combined with modular system for a unique approach for catenary lighting.

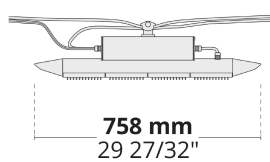
- Equipped with HEPER's patented Milestone (ML) or AreaFlex (AFX) module
- Superior glare management with hidden light source
- Indirect lighting with reflector technology
- Flexible optics give the ability to provide various light distributions in different output levels (AFX)
- Uniform lighting distribution through multifaceted reflectors
- Superior thermal management with upward aligned LED chips
- Easy installation and maintenance with modular structure

Product code	Product name	Light distribution	Delivered lumens flux	Rated input power	Color temperature	Control	Weight
LC2029.672-US	C-LIGHT ML 2 Module	[T2] 130x85°,	5819 - 8475 lm	68 W	2700 K CRI 80, 3000 K CRI 80, 4000 K CRI 70, 4000 K CRI 80	On/Off, 0-10V	8 lbs
LC2029.674-US	C-LIGHT ML 4 Module	[T2] 130x85°,	11643 - 16955 lm	137 W	2700 K CRI 80, 3000 K CRI 80, 4000 K CRI 70, 4000 K CRI 80	On/Off, 0-10V	21.3 lbs
LC2029.862-US	C-LIGHT AFX 2 Module	[T5] 117°,	4140 - 9035 lm	34 - 67 W	2700 K CRI 80, 3000 K CRI 80, 4000 K CRI 70, 4000 K CRI 80	On/Off, 0-10V	7.15 lbs
LC2029.864-US	C-LIGHT AFX 4 Module	[T5] 117°,	8230 - 18085 lm	68 - 135 W	2700 K CRI 80, 3000 K CRI 80, 4000 K CRI 70, 4000 K CRI 80	On/Off, 0-10V	19.36 lbs

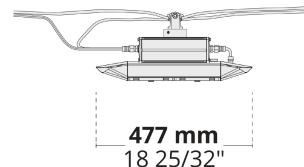
LC2029.672



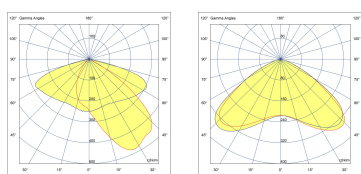
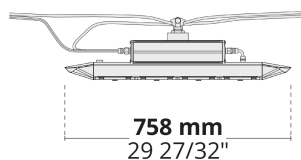
LC2029.674



LC2029.862



LC2029.864



**[T2]**  
Type II



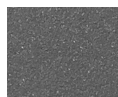
**[T5]**  
Type V

## Extras

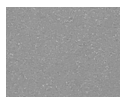
Luminaire body options

**DPC**

**DPC**  
Double powder  
coating



**[HM3]**  
Anthracite  
gray



**[HM4]**  
Light gray



**[CC]**  
Custom  
color  
(Please  
specify RAL  
code)