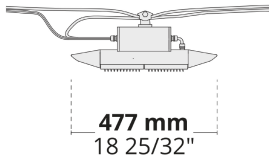


Modern design is combined with modular system for a unique approach for catenary lighting.

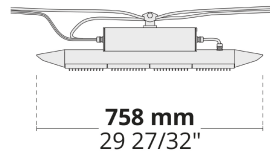
- Equipped with HEPER's patented Milestone (ML) or AreaFlex (AFX) module
- Superior glare management with hidden light source
- Indirect lighting with reflector technology
- Flexible optics give the ability to provide various light distributions in different output levels (AFX)
- Uniform lighting distribution through multifaceted reflectors
- Superior thermal management with upward aligned LED chips
- Easy installation and maintenance with modular structure

Product code	Product name	Light distribution	Delivered lumens flux	Rated input power	Colour temperature	Control	Weight
LC2029.672-EN	C-LIGHT ML 2 Module	[T2] 130x85°,	5819 - 8475 lm	68 W	2700 K CRI 80, 3000 K CRI 80, 4000 K CRI 70, 4000 K CRI 80	On/Off, DALI, AutoDIM, StepDIM	3.65 kg
LC2029.674-EN	C-LIGHT ML 4 Module	[T2] 130x85°,	11643 - 16955 lm	137 W	2700 K CRI 80, 3000 K CRI 80, 4000 K CRI 70, 4000 K CRI 80	On/Off, DALI	9.6 kg
LC2029.862-EN	C-LIGHT AFX 2 Module	[T5] 117°,	4140 - 9035 lm	34 - 67 W	2700 K CRI 80, 3000 K CRI 80, 4000 K CRI 70, 4000 K CRI 80	On/Off, DALI, AutoDIM, StepDIM	3.25 kg
LC2029.864-EN	C-LIGHT AFX 4 Module	[T5] 117°,	8230 - 18085 lm	68 - 135 W	2700 K CRI 80, 3000 K CRI 80, 4000 K CRI 70, 4000 K CRI 80	On/Off, DALI	8.8 kg

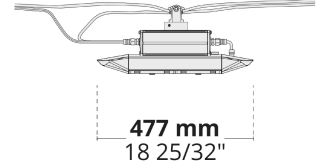
LC2029.672



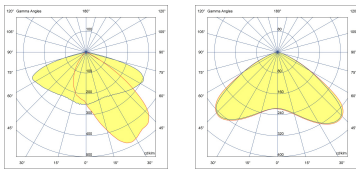
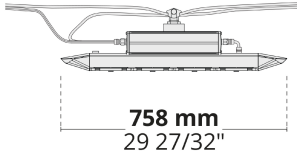
LC2029.674



LC2029.862

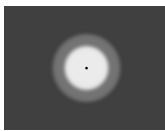


LC2029.864



**[T2]**

Type II,  
Asymmetric,  
Side throw

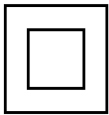


**[T5]**

Type V,  
Symmetric

## Extras

Consult the factory



**C2**

Class II

Consult the factory

120-277V  
50/60Hz

**UNI**

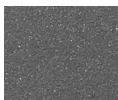
120-277V 50/60Hz

Luminaire body options

**DPC**

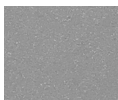
**DPC**

Double powder  
coating



**[HM3]**

Anthracite  
grey



**[HM4]**

Light grey



**[CC]**

Custom  
colour  
(Please  
specify RAL  
code)

**HPR Pazarlama A.Ş.**

Başkent OSB 22. Cd. No: 2, Malıköy, Temelli,  
Sincan, 06909 Ankara, Turkey  
+90 312 267 54 30  
info@hepergroup.com

**HEPER Europe GmbH**

Ahornweg 5a, 58675  
Hemer, Germany  
+49 237 2901 2975  
infoEU@hepergroup.com

We reserve the right to change specifications  
without prior written notice. Edition: 18.04.2024.  
For current version visit [heperlighting.com](http://heperlighting.com). All  
flux ( $\pm 7\%$  tolerance) and power values ( $\pm 10\%$   
tolerance) are derived following appropriate IES,  
CIE, and applicable standards.