

WOODY

Perfect match for nature

CE UK CA IK08 IP65 



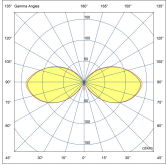
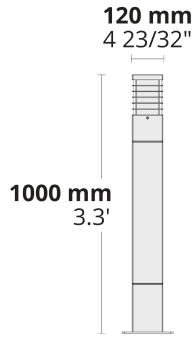
PHASED-
OUT

Made of an aluminium body with wood grain finish, environment-friendly WOODY is in perfect harmony with landscape areas with uniform light distribution.

- Equipped with LED light source
- Glare minimizing diffusor
- Easy installation and maintenance

Product code	Product name	Light distribution	Delivered lumens flux	Rated input power	Colour temperature	Control	Weight
LB6062.693-EN	WOODY	[SYM-4L] 240°	109 - 133 lm	10 W	2700 K CRI 80, 3000 K CRI 80, 4000 K CRI 70, 4000 K CRI 80	On/Off	5.69 kg

LB6062.693



[SYM-4L]
Symmetric,
Special effect: 4
lines

Extras

Consult the factory

Luminaire body options

120-277V
50/60Hz

DPC

UNI

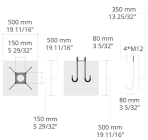
120-277V 50/60Hz

DPC

Double powder
coating

Accessories (To be ordered separately)

Anchorage



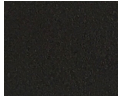
90AJ001

90AJ001

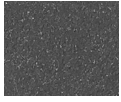
HPR Pazarlama A.Ş.
Başkent OSB 22. Cd. No: 2, Malıköy, Temelli,
Sincan, 06909 Ankara, Turkey
+90 312 267 54 30
info@hepergroup.com

HEPER Europe GmbH
Ahornweg 5a, 58675
Hemer, Germany
+49 237 2901 2975
infoEU@hepergroup.com

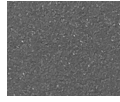
We reserve the right to change specifications without prior written notice. Edition: 03.05.2024. For current version visit heperlighting.com. All flux ($\pm 7\%$ tolerance) and power values ($\pm 10\%$ tolerance) are derived following appropriate IES, CIE, and applicable standards.



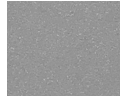
[HM1]
Black



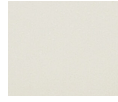
[HM2]
Dark grey



[HM3]
Anthracite
grey



[HM4]
Light grey



[HM5]
White



[HM6]
Bronze



[CC]
Custom
colour
(Please
specify RAL
code)