

VERTEX

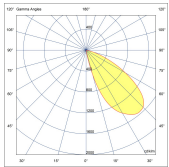
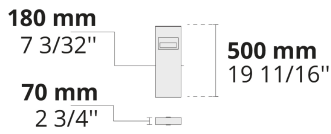
Functional and Sleek Bollard Family



Modular structure, precise optics, and minimalist design make the VERTEX family stand out to illuminate pathways, landscaped areas, and other public spaces.

- Equipped with HEPER's Dyno (DYN) module
- Superior glare management with hidden light source
- Indirect lighting with reflector technology
- Easy installation and maintenance with modular structure

Product code	Product name	Light distribution	Delivered lumens flux	Rated input power	Color temperature	Control	Weight
LB6064.591-US	VERTEX 1 Module	[SLFB] 144x41°	423 - 473 lm	8 W	2700 K CRI 80, 3000 K CRI 80, 4000 K CRI 70, 4000 K CRI 80	On/Off	9.9 lbs

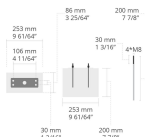


[SLFB]

Special linear,
Forward throw

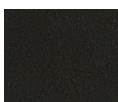
Accessories (To be ordered separately)

Anchor bolts

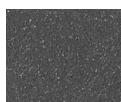


6281005

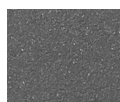
6281005



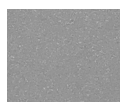
[HM1]
Black



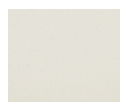
[HM2]
Dark gray



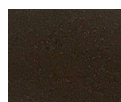
[HM3]
Anthracite
gray



[HM4]
Light gray



[HM5]
White



[HM6]
Bronze



[CC]
Custom
color
(Please
specify RAL
code)