

TRIAN

Contemporary and Scalable Bollard Family

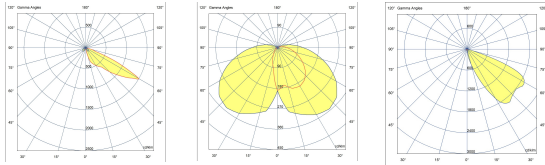
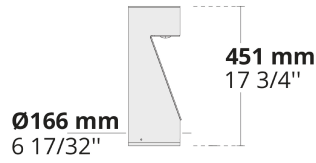
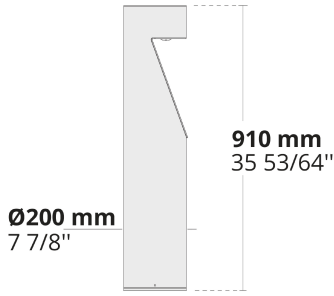
CE UK CA IK05 IK08 IP65 IP66



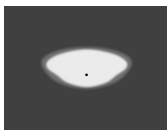
Eye-catching design and unique optics with a light touch make TRIAN stand out to illuminate pathways, landscaped areas, and other public spaces.

- Equipped with HEPER's Dyno (DYN) or AreaFlex (AFX) module
- Minimized glare with hidden light source
- Flexible optics give the ability to provide various light distributions in different output levels (AFX)
- Optimized linear forward light distribution option with full cut-off and minimized stray light
- Easy installation and maintenance
- Modern and elegant design creating a unique touch in exterior applications

Product code	Product name	Light distribution	Delivered lumens flux	Rated input power	Colour temperature	Control	Weight
LB6020.871-EN	TRIAN AFX Midi	[ASYM-FW] 60°, [ASYM-SD] 118°x45°	614 - 2056 lm	8 - 17 W	2200 K CRI 80, 2700 K CRI 80, 3000 K CRI 80, 4000 K CRI 70	On/Off, DALI	8.7 kg
LB6042.545-EN	TRIAN S	[SLFB] 120x47°	69 - 79 lm	3 W	2700 K CRI 80, 3000 K CRI 80, 4000 K CRI 70, 4000 K CRI 80	On/Off	3.5 kg



[ASYM-FW]
Asymmetric
Forward



[ASYM-SD]
Asymmetric Side



[SLFB]
Special linear,
Forward throw

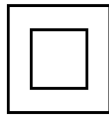
Extras

Light output



CLO
Constant light output

Consult the factory



C2
Class II

Luminaire body options



DPC
Double powder
coating

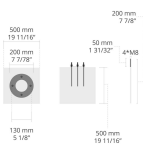
Consult the factory



UNI
120-277V 50/60Hz

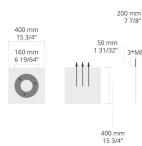
Accessories (To be ordered separately)

Anchorage



623J014
623J014

Anchorage



629J014
629J014

