

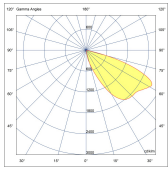
TRIAN (-)

Contemporary and Scalable Bollard Family



Eye-catching design and unique optics with a light touch make TRIAN stand out to illuminate pathways, landscaped areas, and other public spaces.

Product code	Product name	Light distribution	Delivered lumens flux	Rated input power	Color temperature	Control	Weight
LB6020.546-US	TRIAN	[SLFB] 120x47°,	138 - 159 lm	4 W	2700 K CRI 80, 3000 K CRI 80, 4000 K CRI 70, 4000 K CRI 80	On/Off	18.7 lbs

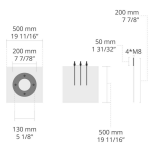


[SLFB]

Special linear,
Forward throw

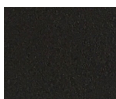
Accessories (To be ordered separately)

Anchor bolts

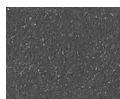


623J014

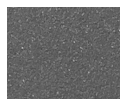
623J014



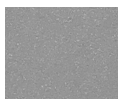
[HM1]
Black



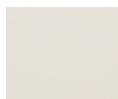
[HM2]
Dark gray



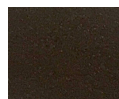
[HM3]
Anthracite
gray



[HM4]
Light gray



[HM5]
White



[HM6]
Bronze



[CC]
Custom
color
(Please
specify RAL
code)