

TRIAN (-)

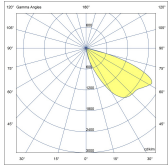
Contemporary and Scalable Bollard Family

CE UK CA IK05 IP65



Eye-catching design and unique optics with a light touch make TRIAN stand out to illuminate pathways, landscaped areas, and other public spaces.

Product code	Product name	Light distribution	Delivered lumens flux	Rated input power	Colour temperature	Control	Weight
LB6020.546-EN	TRIAN	[SLFB] 120x47°	138 - 159 lm	4 W	2700 K CRI 80, 3000 K CRI 80, 4000 K CRI 70, 4000 K CRI 80	On/Off	8.6 kg



[SLFB]

Special linear,
Forward throw

Extras

Consult the factory

Luminaire body options

120-277V
50/60Hz

DPC

UNI

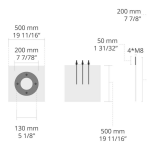
120-277V 50/60Hz

DPC

Double powder
coating

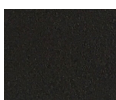
Accessories (To be ordered separately)

Anchorage



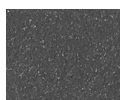
623J014

623J014



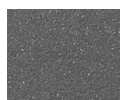
[HM1]

Black



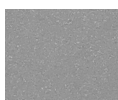
[HM2]

Dark grey



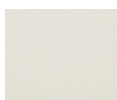
[HM3]

Anthracite
grey



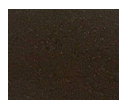
[HM4]

Light grey



[HM5]

White



[HM6]

Bronze



[CC]

Custom
colour
(Please
specify RAL
code)

HPR Pazarlama A.Ş.

Başkent OSB 22. Cd. No: 2, Malıköy, Temelli,
Sincan, 06909 Ankara, Turkey

+90 312 267 54 30

info@hepergroup.com

HEPER Europe GmbH

Ahornweg 5a, 58675

Hemer, Germany

+49 237 2901 2975

infoEU@hepergroup.com

We reserve the right to change specifications without prior written notice. Edition: 27.04.2024. For current version visit heperlighting.com. All flux ($\pm 7\%$ tolerance) and power values ($\pm 10\%$ tolerance) are derived following appropriate IES, CIE, and applicable standards.