

SPARK ST

Flexible, Elegant and Multi-functional
Bollard Family

CE UK CA IK07 IP66

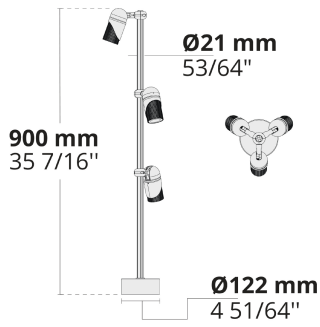


SPARK is a product family that came into play for application in façade and landscape lighting. SPARK is a highly flexible and versatile product usable in different fields thanks to its rich accessories.

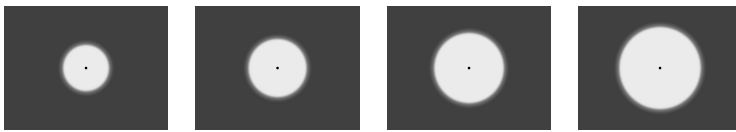
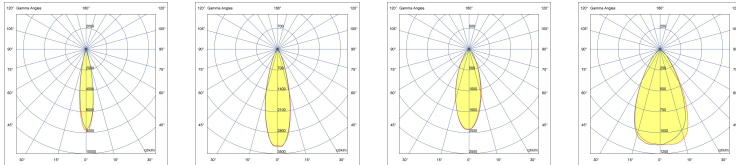
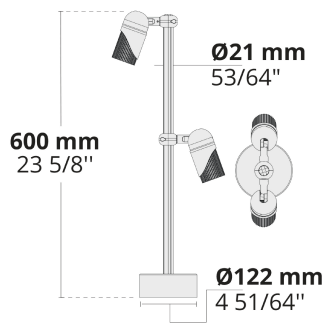
- Equipped with high efficacy COB LED with long time reliability
- 4 different light distribution options from very narrow to wide
- Available in 2700K and 3000K with a color rendering index value of 90
- Anodized aluminum body with knurled surface improves the thermal management
- Easy locking system for fine tuning and aiming
- 0°/+355° rotatable, 0°/+90° tiltable mechanism allows precise positioning of the light beam

Product code	Product name	Light distribution	Delivered lumens flux	Rated input power	Colour temperature	Control	Weight
LB8043.529-EN	SPARK ST Trio	[VN] 18°, [N] 24°, [MN] 36°, [M] 60°,	1770 - 2444 lm	30 - 33 W	2700 K CRI 90, 3000 K CRI 80, 3000 K CRI 90		2.5 kg
LB8044.529-EN	SPARK ST Duo	[VN] 18°, [N] 24°, [MN] 36°, [M] 60°,	1180 - 1570 lm	22 W	2700 K CRI 90, 3000 K CRI 80, 3000 K CRI 90		1.8 kg
LB8049.529-EN	SPARK ST	[VN] 18°, [N] 24°, [MN] 36°, [M] 60°,	590 - 727 lm	10 W	2700 K CRI 90, 3000 K CRI 80, 3000 K CRI 90	On/Off, DALI	1.1 kg

LB8043.529



LB8044.529



[VN] Very narrow **[N]** Narrow **[MN]** Medium narrow **[M]** Medium

Extras

Light output	Light output	Light output	Light output	Light output	Light output
BCF Blue Colour Filter	GCF Green Colour Filter	HNY Honeycomb	OCF Orange Colour Filter	RCF Red Colour Filter	YCF Yellow Colour Filter

Luminaire body options



DPC
Double powder coating

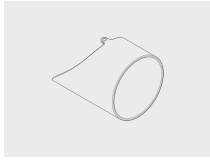
Accessories (To be ordered separately)

Optical accessories Optical accessories Mounting accessories

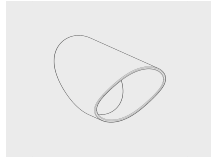
HPR Pazarlama A.Ş.
Başkent OSB 22. Cd. No: 2, Malıköy, Temelli,
Sincan, 06909 Ankara, Turkey
+90 312 267 54 30
info@hepergroup.com

HEPER Europe GmbH
Ahornweg 5a, 58675
Hemer, Germany
+49 237 2901 2975
infoEU@hepergroup.com

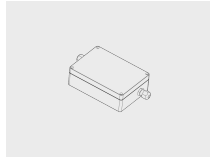
We reserve the right to change specifications without prior written notice. Edition: 19.04.2024. For current version visit heperlighting.com. All flux (±%7 tolerance) and power values (±%10 tolerance) are derived following appropriate IES, CIE, and applicable standards.



Visor for SPARK
101652204

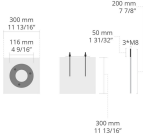


Snoot for SPARK
101652202



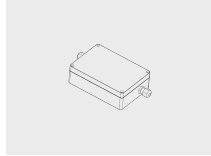
DALI & On/Off driver within an IP67 box for SPARK Trio
007502123

Anchorage



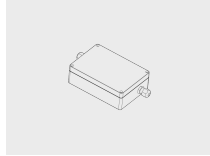
6281004
6281004

Mounting accessories



DALI & On/Off driver within an IP67 box for SPARK Duo
007502122

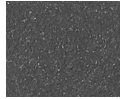
Mounting accessories



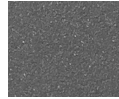
DALI & On/Off driver within an IP67 box for SPARK
007502121



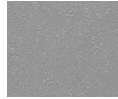
[HM1]
Black



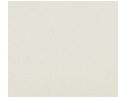
[HM2]
Dark grey



[HM3]
Anthracite grey



[HM4]
Light grey



[HM5]
White



[CC]
Custom colour
(Please specify RAL code)



[HM6]
Bronze