

POLSO (-)

An Elegant and Sturdy Bollard

CE UK CA IK05 IP65



PHASED-
OUT

With its round frame, matching column options, and three-way light distribution POLSO bollard is a reliable choice for pathways, landscaped areas, and other public spaces.

- Minimized glare with recessed light source
- Three-way light distribution to illuminate areas and pathways while adding a unique effect
- Different height options and matching bollard to complement high-end architectural projects
- Minimalistic design to blend in with different types of architecture

Product code	Product name	Light distribution	Delivered lumens flux	Rated input power	Colour temperature	Control	Weight
LB6051.006-EN	POLSO S		390 - 410 lm	7.5 W	3000 K CRI 90, 4000 K CRI 90	On/Off	3.6 kg

Extras

Consult the factory

120-277V
50/60Hz

UNI

120-277V 50/60Hz

Luminaire body options

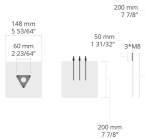
DPC

DPC

Double powder
coating

Accessories (To be ordered separately)

Anchorage



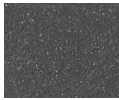
628I002

628I002



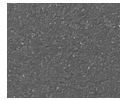
[HM1]

Black



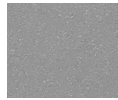
[HM2]

Dark grey



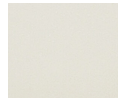
[HM3]

Anthracite
grey



[HM4]

Light grey



[HM5]

White



[HM6]

Bronze



[CC]

Custom
colour
(Please
specify RAL
code)

HPR Pazarlama A.Ş.

Başkent OSB 22. Cd. No: 2, Malıköy, Temelli,
Sincan, 06909 Ankara, Turkey
+90 312 267 54 30
info@hepergroup.com

HEPER Europe GmbH

Ahornweg 5a, 58675
Hemer, Germany
+49 237 2901 2975
infoEU@hepergroup.com

We reserve the right to change specifications
without prior written notice. Edition: 30.04.2024.
For current version visit heperlighting.com. All
flux ($\pm 7\%$ tolerance) and power values ($\pm 10\%$
tolerance) are derived following appropriate IES,
CIE, and applicable standards.