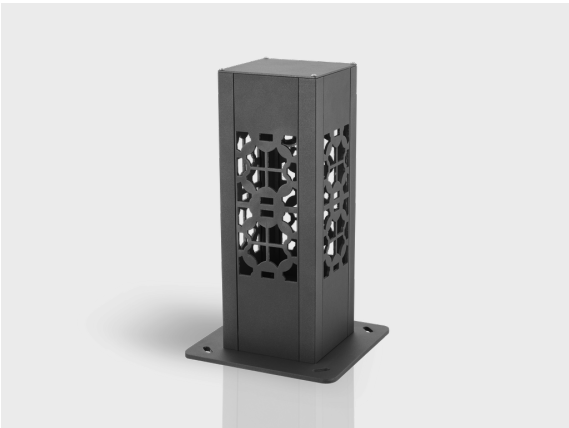


LIA

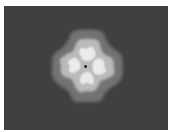
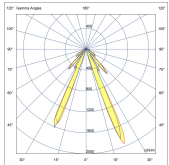
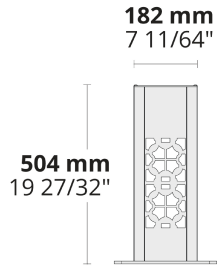
A Special Bollard with Unique Reflections



Square form factor, distinctive light effects, and a sturdy body make LIA stand out to illuminate pathways, landscaped areas, and other public spaces.

- Equipped with high-efficiency and long-lasting LED light source
- LED lighting solution with traditional appearance
- Optimized symmetrical uniform light distribution with a unique effect
- Minimalistic design to blend in with different types of architecture
- Sophisticated and decorative pattern on 4 sides
- Easy installation and maintenance

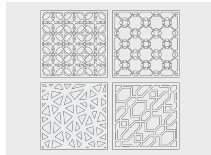
Product code	Product name	Light distribution	Delivered lumens flux	Rated input power	Color temperature	Control	Weight
LB6059.599-US	LIA	[SYM-4L] 50°,	256 - 582 lm	14 - 29 W	2700 K CRI 80, 3000 K CRI 80, 4000 K CRI 70, 4000 K CRI 80	On/Off, 0-10V	15 lbs



[SYM-4L]
Symmetric,
Special effect: 4
lines

Extras

Consult the factory



CP
Custom pattern

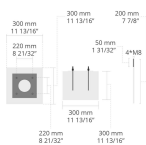
Luminaire body options



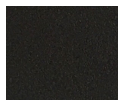
DPC
Double powder
coating

Accessories (To be ordered separately)

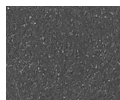
Anchor bolts



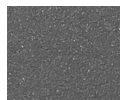
628I003
628I003



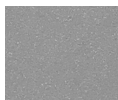
[HM1]
Black



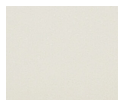
[HM2]
Dark gray



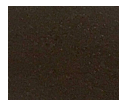
[HM3]
Anthracite
gray



[HM4]
Light gray



[HM5]
White



[HM6]
Bronze



[CC]
Custom
color
(Please
specify RAL
code)