

# DRAGO

Sleek and Fascinating Bollard Family



Clean lines, different light distribution options, and jaw-dropping optics make the DRAGO family stand out to illuminate pathways, landscaped areas, and other public spaces.

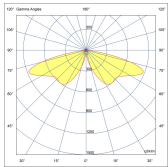
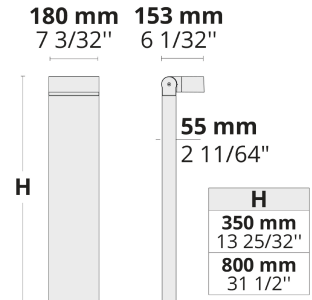
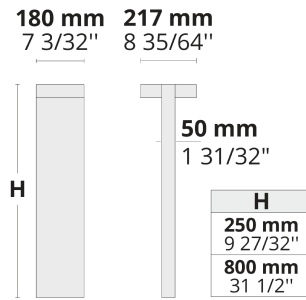
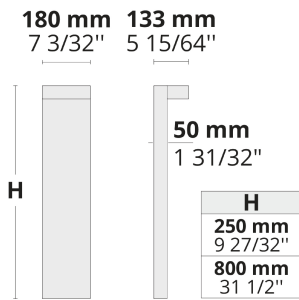
- Equipped with HEPER's Dyno (DYN) module or high efficiency LED chips with flexible lens optics
- 1 to 6 light distribution ratio with no uplight (DYN)
- Minimized glare with hidden light source
- Indirect lighting with reflector technology
- Optimized linear forward or side throw options with full cut-off and minimized stray light
- Motion sensor & emergency kit options

Product code	Product name	Light distribution	Delivered lumens flux	Rated input power	Color temperature	Control	Weight
LB6048.575-US	DRAGO Forward	[SLFB] 65x70°,	721 - 2100 lm	10 - 20 W	2200 K CRI 80, 2700 K CRI 80, 3000 K CRI 80, 4000 K CRI 70, 4000 K CRI 80	On/Off, 0-10V	7.76 lbs (0.8'), 9.9 lbs (2.6')
LB6048.585-US	DRAGO Side	[SLSB] 145x45°,	360 - 1050 lm	5 - 10 W	2200 K CRI 80, 2700 K CRI 80, 3000 K CRI 80, 4000 K CRI 70, 4000 K CRI 80	On/Off, 0-10V	7.76 lbs (0.8'), 9.9 lbs (2.6')
LB6048.910-US	DRAGO 8 LED	[T3] 144x57°,	709 - 808 lm	9.5 W	2700 K CRI 80, 3000 K CRI 80, 4000 K CRI 70, 4000 K CRI 80	On/Off, 0-10V	7.76 lbs (0.8'), 11.35 lbs (2.6')
LB6068.570-US	DRAGO Forward Duo	[SLFB] 65x70°,	1442 - 4200 lm	20 - 40 W	2200 K CRI 80, 2700 K CRI 80, 3000 K CRI 80, 4000 K CRI 70, 4000 K CRI 80	On/Off, 0-10V	15.4 lbs (2.6'), 13.2 lbs (0.8')
LB6068.571-US	DRAGO Side Duo	[SLSB] 145x45°,	720 - 2100 lm	10 - 20 W	2200 K CRI 80, 2700 K CRI 80, 3000 K CRI 80, 4000 K CRI 70, 4000 K CRI 80	On/Off, 0-10V	15.4 lbs (2.6'), 13.2 lbs (0.8')

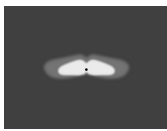
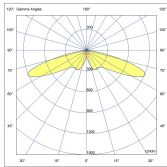
LB6048.575 / LB6048.585  
LB6048.910

LB6068.570 / LB6068.571

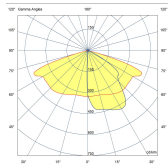
LB7035.575 / LB7035.585



**[SLFB]**  
Special linear,  
Forward throw



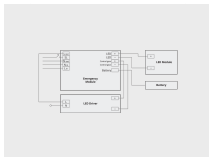
**[SLSB]**  
Special linear,  
Side throw



**[T3]**  
Type III

## Extras

Consult the factory



**EK**  
Emergency kit

Consult the factory



**MS**  
Motion sensor

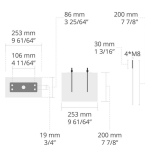
Luminaire body options



**DPC**  
Double powder  
coating

## Accessories (To be ordered separately)

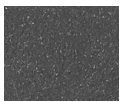
Anchor bolts



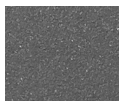
**6281000**  
6281000



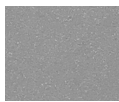
**[HM1]**  
Black



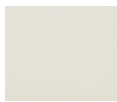
**[HM2]**  
Dark gray



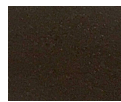
**[HM3]**  
Anthracite  
gray



**[HM4]**  
Light gray



**[HM5]**  
White



**[HM6]**  
Bronze



**[CC]**  
Custom  
color  
(Please  
specify RAL  
code)